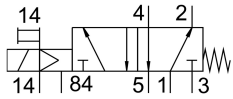
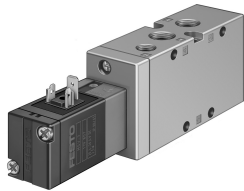


# Air solenoid valve MVH-5-1/4-S-B

Part number: 15903



## Data sheet

Feature	Value
Valve function	5/2, monostable
Actuation type	Electrical
Width	32 mm
Standard nominal flow rate	1300 l/min
Pneumatic working port	G1/4
Operating pressure	0 MPa...1 MPa 0 bar...10 bar
Structural design	Plate seat
Reset method	Mechanical spring
Nominal width	7 mm
Width dimension	33 mm
Exhaust air function	With flow control option
Sealing principle	Soft
Mounting position	Any
Manual override	Non-detenting
Type of control	Pilot-controlled
Pilot air supply port	External
Flow direction	Non-reversible
Lap	Underlap
Pilot pressure MPa	0.15 MPa...0.8 MPa
Pilot pressure	1.5 bar...8 bar
b-value	0.29
C value	5.5 l/sbar
Max. switching frequency	3 Hz
Switching time off	36 ms
On switching time	15 ms
Max. positive test pulse with 0 signal	2200 µs
Max. negative test pulse on 1 signal	3700 µs
Coil characteristics	24 V DC: 2.5 W
Permissible voltage fluctuations	+/- 10 %
Operating medium	Compressed air as per ISO 8573-1:2010 [7:4:4]
Information on operating and pilot media	Operation with oil lubrication possible (required for further use)

Feature	Value
Corrosion resistance class (CRC)	1 - Low corrosion stress
LABS (PWIS) conformity	VDMA24364-B1/B2-L
Storage temperature	-40 °C...60 °C
Temperature of medium	-5 °C...50 °C
Pilot medium	Compressed air as per ISO 8573-1:2010 [7:4:4]
Ambient temperature	-5 °C...50 °C
Product weight	360 g
Type of mounting	Optionally: On PR rail With through-hole
Auxiliary pilot air port 14	G1/8
Pilot exhaust air port 84	M5
Pilot air port 14	G1/8
Pneumatic connection 1	G1/4
Pneumatic connection 2	G1/4
Pneumatic connection 3	G1/4
Pneumatic connection 4	G1/4
Pneumatic connection 5	G1/4
Note on materials	RoHS-compliant
Seals material	NBR TPE-U(PU)
Housing material	Die-cast aluminum